

Local Planning Panel

9 August 2023

Application details

Address: 56-78 Oxford Street, Darlinghurst

Application Number: D/2022/969

Applicant: The Lune Co Pty Ltd

Owner: The Council of the City of Sydney

Architect: Ewert Leaf

Planning Consultant: Ethos Urban

Heritage Consultant: Urbis

Proposal

- fit out and use of parts of the lower ground floor level for cafe, retail and bakery uses
- associated alterations
- signage
- ancillary office
- end of journey and meeting room areas

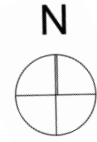
Recommendation


Approval, subject to conditions

Notification

- exhibition period 28 September 2022 to 27 October 2022
- 1,109 owners and occupiers notified
- no submissions received

Site



 subject site

 area of development on lower ground floor fronting Foley Street and Burton Street



Burton Street



Foley Street



adjoining site Burton Street



Oxford Square



opposite site on corner of Foley Street and Burton Street



opposite site Burton Street



site below GA Zink & Sons



Oxford Street



adjoining site
Oxford Street



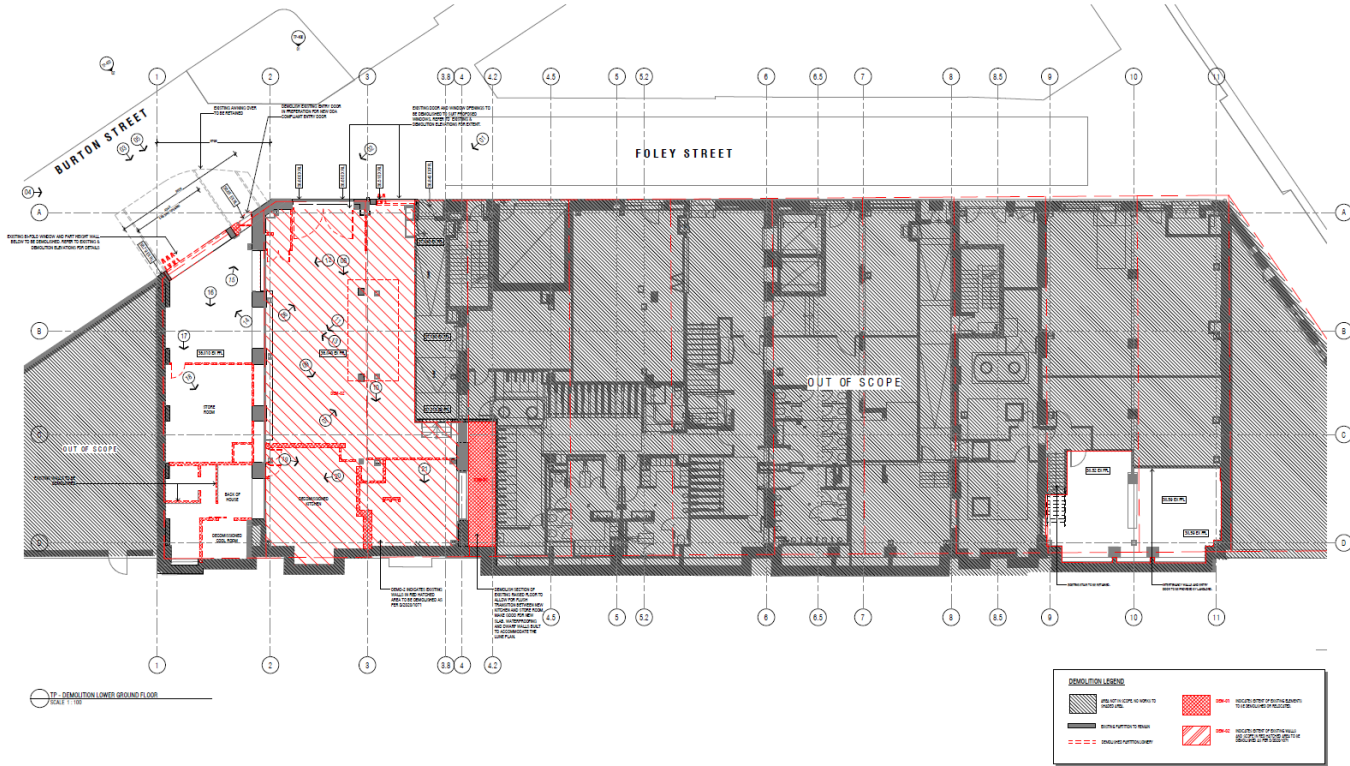
corner of Oxford Square and Oxford Street



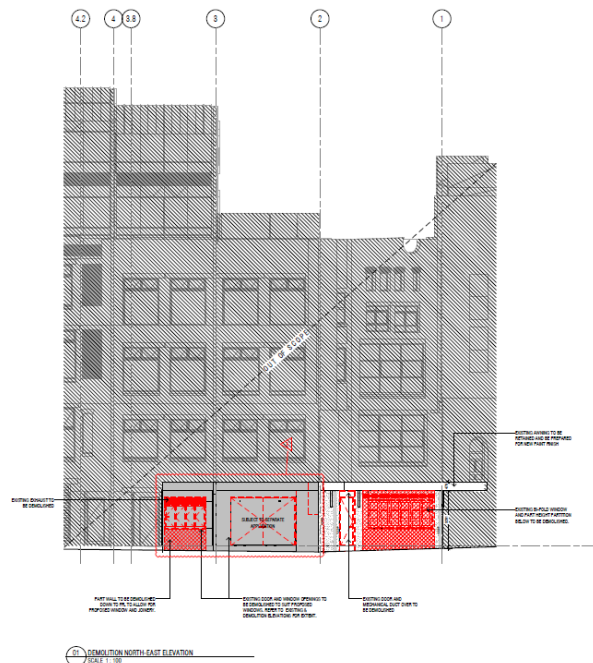
Oxford Street

adjoining site

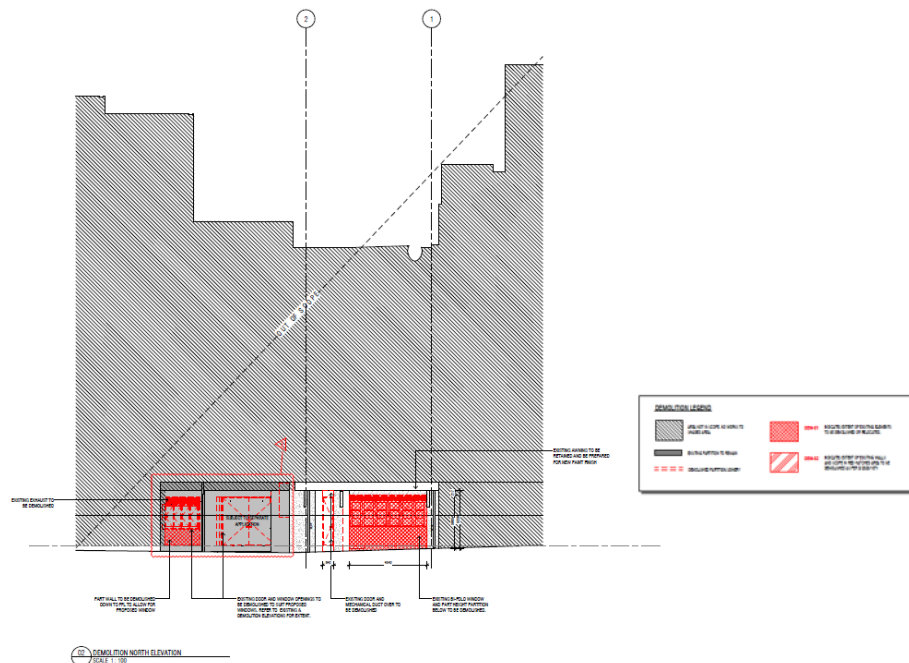
Proposal



lower ground floor demolition plan

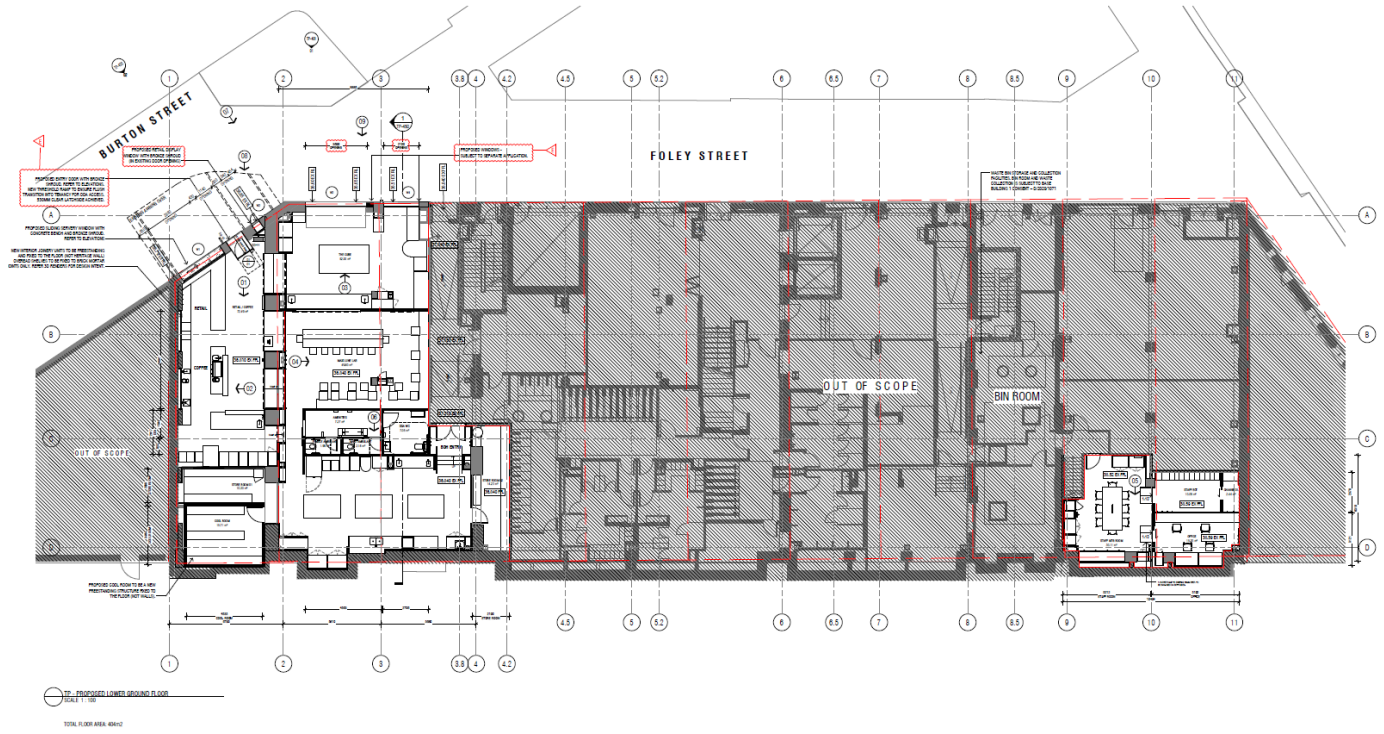


Foley Street

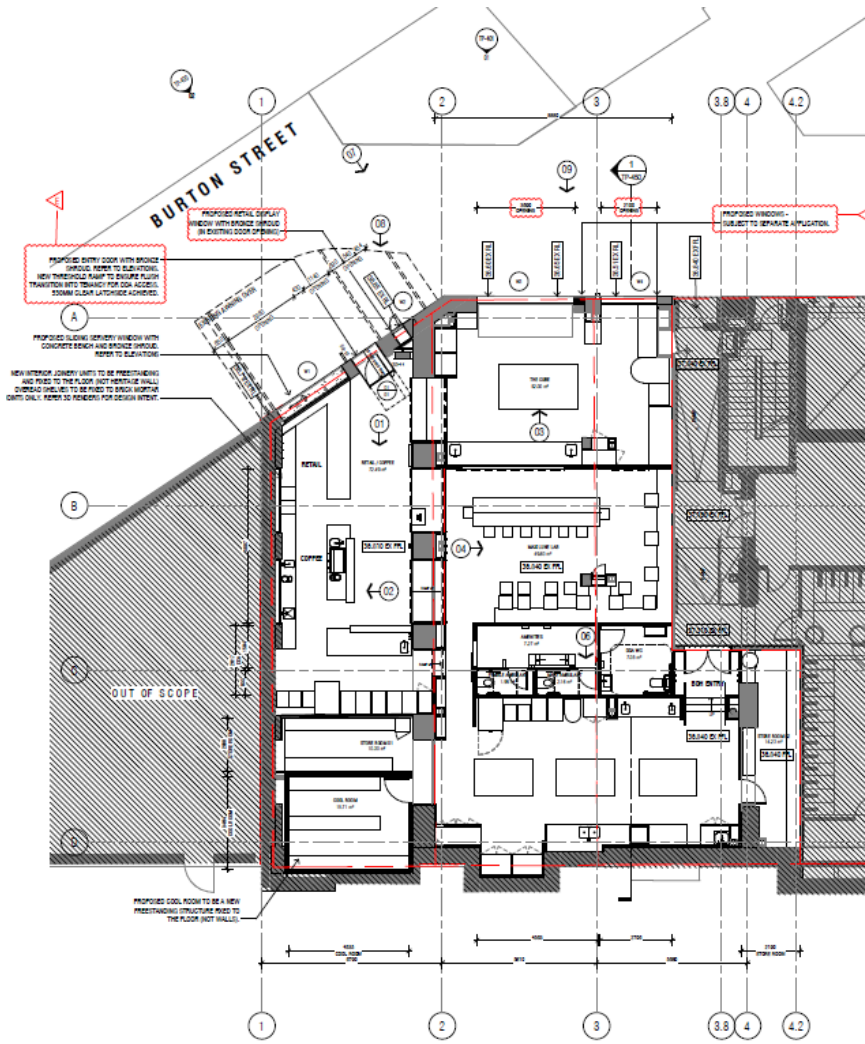


Burton Street

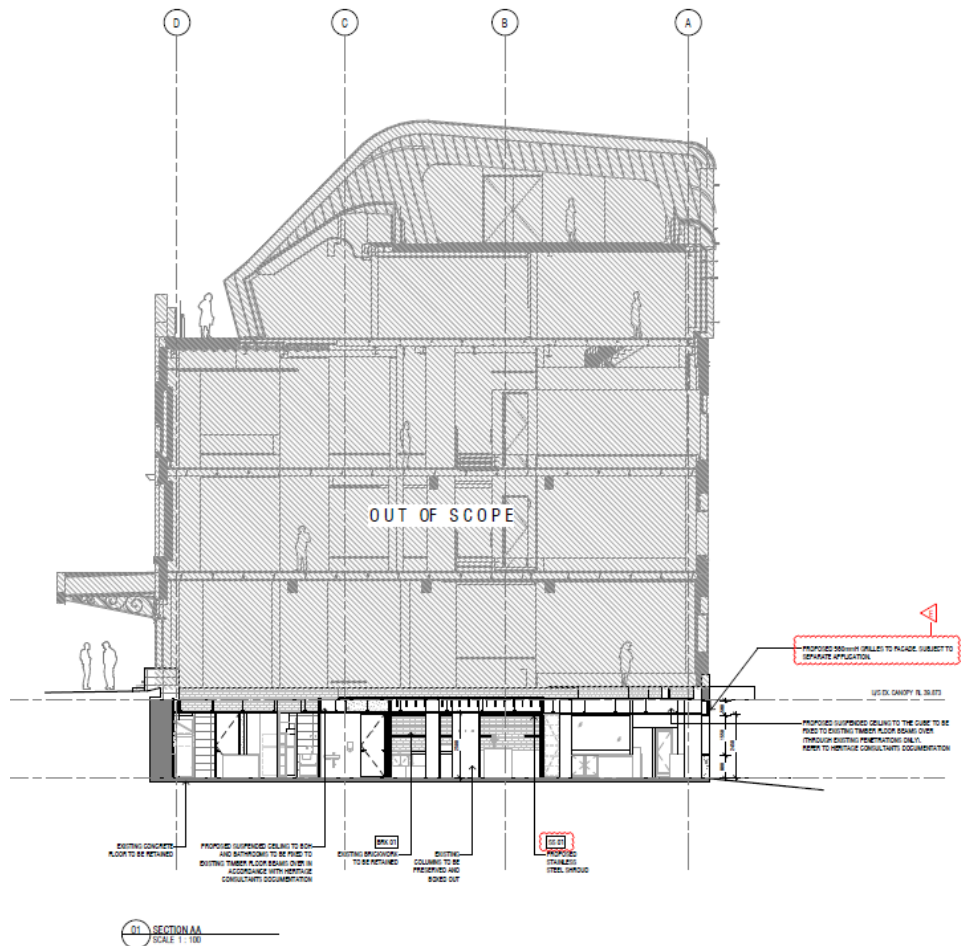
demolition elevations



proposed floor plan



proposed floor plan



01 SECTION AA
SCALE 1:100

section



PROPOSED INTERIOR VIEW 01 - RETAIL & COFFEE AREA



PROPOSED INTERIOR VIEW 02 - RETAIL & COFFEE AREA



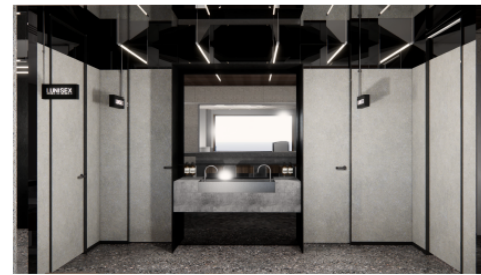
PROPOSED INTERIOR VIEW 03 - THE CUBE



PROPOSED INTERIOR VIEW 04 - LUME LAB AND SEATING AREA



PROPOSED INTERIOR VIEW 05 - WORK ZONE



PROPOSED INTERIOR VIEW 06 - BATHROOM LOBBY



PROPOSED EXTERIOR VIEW 07 - SHOPFRONT

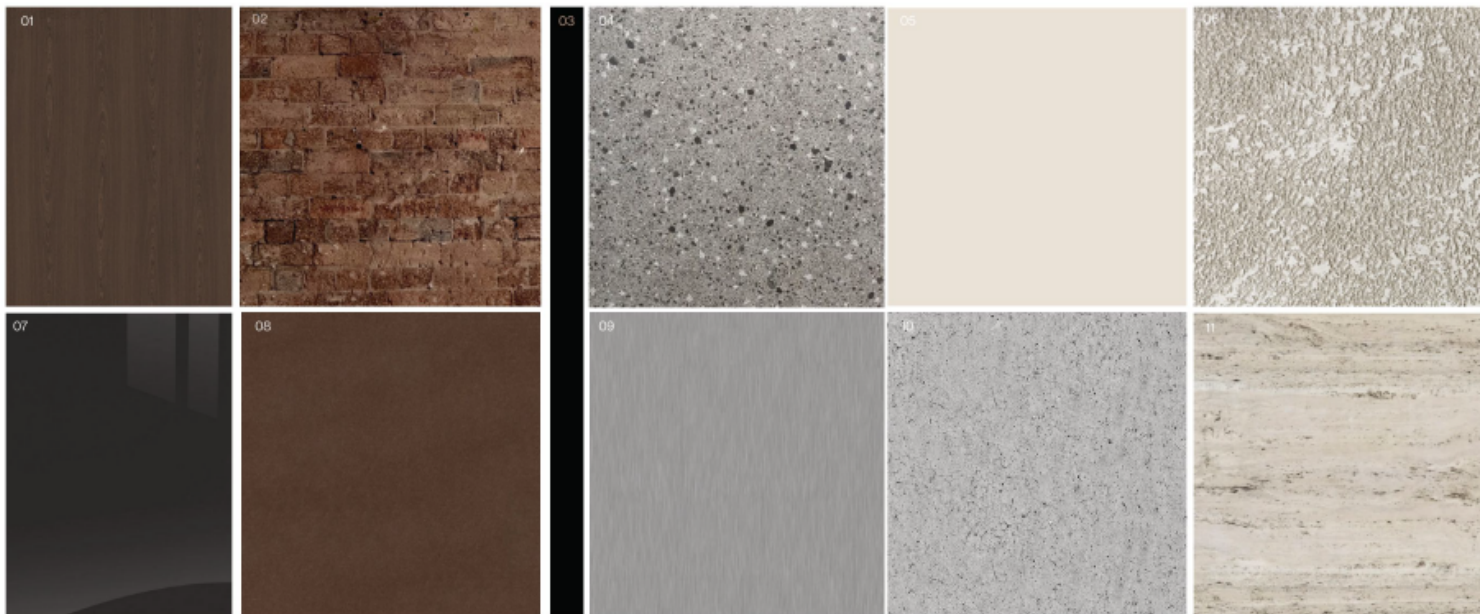


PROPOSED EXTERIOR VIEW 09 - ENTRY SHOPFRONT



PROPOSED EXTERIOR VIEW 10 - ENTRY SHOPFRONT

internal and external views



01
Stained Timber

02
Existing Brick Walls

03
Black Powdercoat

04
Polished Concrete Floor

05
Paint - Grand Piano Half

06
Textured Plaster Walls

07
Charcoal Mirror

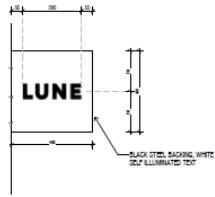
08
Bronze

09
Stainless Steel

10
Concrete

11
Travertine Stone

interior finishes



10 SG-10 SIGNAGE ELEVATION
SCALE 1:10



10 SG-10 SIGNAGE PLAN
SCALE 1:10



NEW GG-10 INTERNALLY ILLUMINATED BLAZE SIGNAGE CONICAL PIPES TO FACADE WALL
CONCRETE: 400mm x 100mm x 400mm
TEXT LUNE: FINISH: BLACK STEEL BACKING, WHITE ILLUMINATED TEXT



LUNE BLAZE SIGNAGE REFERENCE (INCLUDES CONE STORE)

SG10 SIGNAGE DETAILS

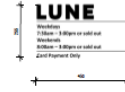
CATEGORISATION OF SIGNAGE: Business Identification Signage



EXTERNAL GLAZING FILM SIGNAGE IN GOLD FOL, FINISH: TEXT: LUNE LOGO.
OPENING: HOLE TOTAL WIDTH TO BE 450mm. EVERYTHING ELSE IN PROPORTION
TO TEXT WIDTH.



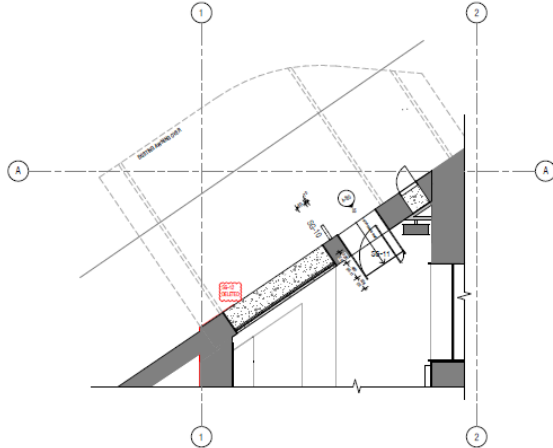
EXTERNAL GLAZING FILM GOLD FOL, FINISH: SIGN REFERENCE



10 SG-11 SIGNAGE ELEVATION
SCALE 1:10

SG11 SIGNAGE DETAILS

CATEGORISATION OF SIGNAGE: Business Identification Signage



SIGNAGE PLAN

SCALE: 1:50

Compliance with key LEP standards

	control	proposed	compliance
height	56 Oxford: 15m	3.063m	yes
	58-78 Oxford: 23-25m	3.063m	yes
floor space ratio	56 Oxford: 4:1	3.93:1	yes
	58-78 Oxford: 4.5:1	4.38:1	yes

Compliance with key DCP controls

	control	proposed	compliance
active frontage	required to Burton Street	yes	yes
frontage width	maximum 8m	>8m	acceptable existing frontage width
tenancy area	maximum 300m ²	404m ²	acceptable, discretionary for heritage items and basement levels

Hours of operation

	base hours & extended hours	proposed hours	recommended hours
Monday to Sunday	24 hours	5.00am to 3.00pm	5.00am to 3.00pm

Issues

- reliance on development consent D/2020/1071
- heritage conservation

Reliance on development consent D/2020/1071

- conditions recommended to ensure subject application read in conjunction with development consent D/2020/1071 (as modified)
- conditions recommended to ensure compliance with conditions of development consent D/2020/1071 (as modified)

Heritage conservation

- general terms of approval granted by Heritage NSW
- Council's Heritage Specialist supports proposal, subject to conditions

Recommendation

Approval subject to conditions